

Monthly Report October 2013

HUPX DAM reached 846 064,6 MWh in October which is a record traded volume. In the examined month the total traded volume increased by 15,52% compared to the 732 412,9 MWh achieved in September. The average daily traded volume was 27 292,4 MWh. The highest daily traded volume was 30 905,3 MWh on the delivery day of 16th October. The number of admitted members was 53 in the examined month.

List of the Members



- Alpiq Energy SE
- CEZ, a.s.
- Danske Commodities A/S
- E.ON Global Commodities SE
- Energy Financing Team (Switzerland) AG
- GDF SUEZ Energia Magyarország Zrt.
- GEN-I d.o.o.
- Holding Slovenske Elektrarne d.o.o.
- JAS Budapest Zrt.
- Magyar Áramszolgáltató Kft.
- Mátrai Erőmű Zrt.
- MVM Partner Zrt.
- Statkraft Markets GmbH
- BC-Energiakereskedő Kft.
- Budapesti Erőmű Zrt.
- Citigroup Global Markets Limited
- Compagnie Nationale du Rhone
- DB Energy Commodities Ltd.
- Dunafin Kft.
- EDF Trading Limited
- Edison Trading S.p.A. Magyarországi Fióktelepe
- EGL AG
- Elektro Energija d.o.o.
- Enel Trade S.p.A.
- Ezpada s.r.o.
- Freepoint Commodities Europe LLP
- Gazprom Marketing & Trading Ltd
- GDF Suez Trading SAS
- Greenergy-Trade Kft.
- Gunvor International B.V.
- HAMBURGER Hungaria Kft.
- HEP Magyarország Energia Kft
- Interenergo d.o.o.
- ISD Power Kft.
- MAVIR Zrt.
- Mercuria Energy Trading S.A
- Monsson Energy Trading S.R.L.
- Morgan Stanley Capital Group Energy Europe Limited
- Motim Zrt.
- ÓAM Ózdi Acélművek Kft.
- OMV Trading GmbH
- OPTENERGY Kft.
- PETROL d.d. Ljubljana
- RD CZ ENERGY s.r.o.
- Repower Trading Ceska republika s.r.o
- RWE Supply & Trading GmbH
- TEI-ENERGY S.p.A
- TINMAR-IND S.A.
- TRANSENERGO COM S.A.
- Vattenfall EnergyTrading GmbH
- VERBUND AG
- Vitol Gas & Power B.V.
- VPP Erőmű Üzemeltető és Kereskedelmi Zrt.

HUPX Day-Ahead Market

Description	09/2013	10/2013	Change	
HUPX Base Average Price (EUR/MWh)	46,56	50,40	3,84	8,25%
HUPX Peak Average Price (EUR/MWh)	54,46	61,15	6,69	12,28%
Diff. BL. HUPX→OTC	0,24	1,43	1,19	496,89%
Diff. PL. HUPX→OTC	-0,75	2,08	2,83	375,91%

Highest Traded Price (EUR/MWh)	130,08	250,01	119,93	92,20%
Lowest Traded Price (EUR/MWh)	10,18	-2,17	-12,35	-121,32%

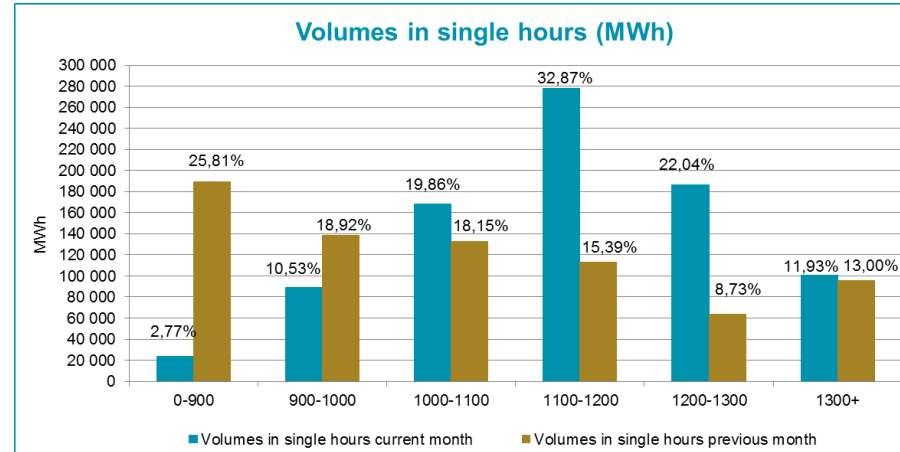
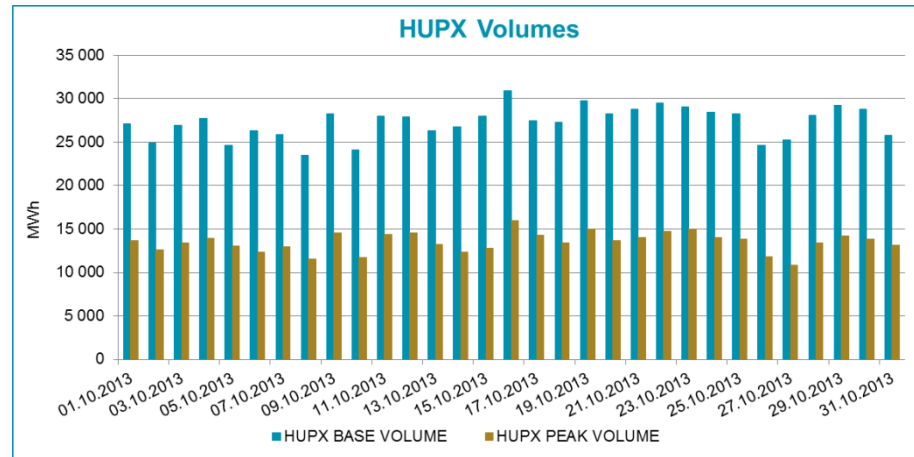
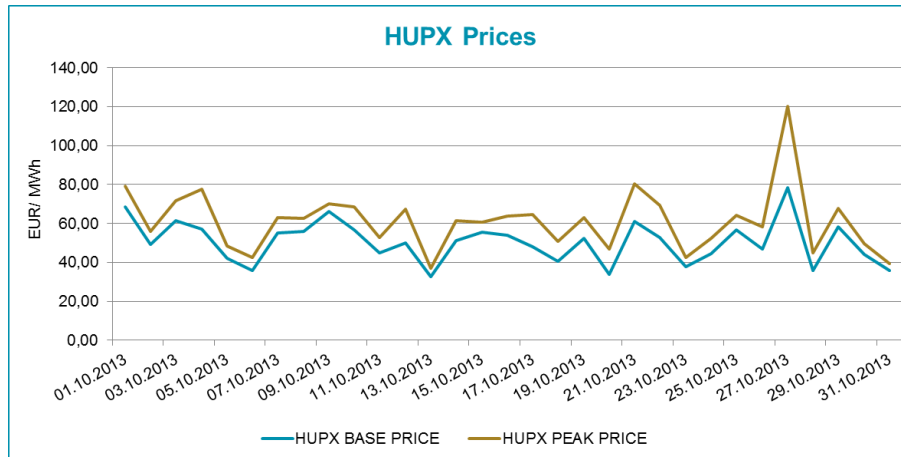
Total Turnover (EUR)	34 486 507	42 652 416	8 165 908	23,68%
Average Daily Turnover (EUR)	1 149 550	1 375 884	226 334	19,69%
Max. Daily Turnover (EUR)	1 876 192	1 913 808	37 616	2,00%
Min. Daily Turnover (EUR)	549 438	882 429	332 991	60,61%

Description	09/2013	10/2013	Change	
Total Volume (MWh)	732 412,9	846 064,6	113 651,7	15,52%
Average Daily Traded Volume (MWh)	24 413,8	27 292,4	2 878,6	11,79%
Highest Daily Traded Volume (MWh)	34 162,5	30 905,3	-3 257,2	-9,53%
Lowest Daily Traded Volume(MWh)	19 341,7	23 511,9	4 170,2	21,56%
Highest Hourly Traded Volume (MWh)	1 703,5	1 520,1	-183,4	-10,77%
Lowest Hourly Traded Volume(MWh)	574,1	799,8	225,7	39,31%
Average Hourly Traded Volume (MWh)	1 017,2	1 135,7	118,4	11,64%

DAM - Weekdays	01-24 (Baseload)	01-24 (Baseload)		
Average Daily Traded Volume (MWh)	25 216,3	27 517,6	2 301,4	9,13%
DAM - Weekend	01-24 (Baseload)	01-24 (Baseload)		
Average Daily Traded Volume (MWh)	22 541,3	26 644,8	4 103,6	18,20%

DAM - Weekdays	09-20 (Peakload)	09-20 (Peakload)		
Average Daily Traded Volume (MWh)	12 495,8	13 651,4	1 155,5	9,25%
DAM - Weekend	09-20 (Peakload)	09-20 (Peakload)		
Average Daily Traded Volume (MWh)	10 862,6	13 073,1	2 210,5	20,35%

HUPX Prices and volumes



Note:

The bar chart shows the traded volumes in single hours in the examined period (01/10/2013-31/10/2013). We categorized the results according to the traded volume of each hour. Compared to the previous month, the distribution of executed volumes shows changes in the traded volumes: the ratio of the range 0 - 900 MWh, 900 - 1 000 MWh and 1 300+ MWh decreased, while the ratio increased regarding the 1 000 - 1 100 MWh, 1 100 - 1 200, 1 200 - 1 300 MWh.

HUPX Day-Ahead Market Traded Volumes

MWh / Delivery day / hour

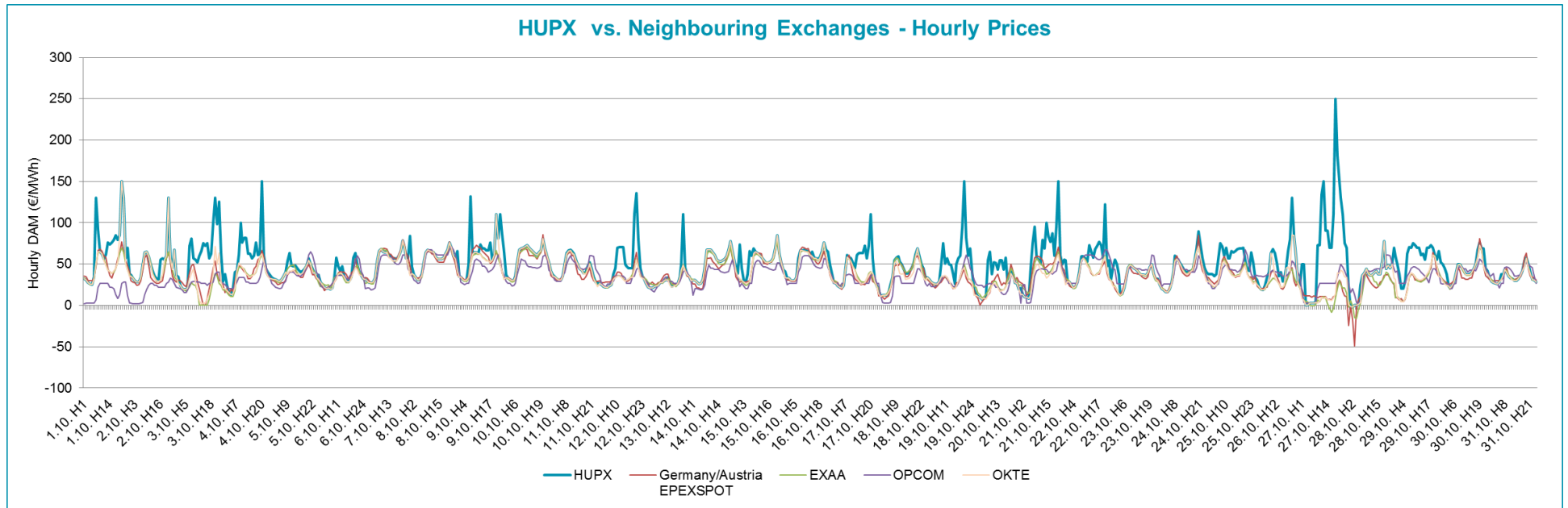
Delivery hour	10/01	10/02	10/03	10/04	10/05	10/06	10/07	10/08	10/09	10/10	10/11	10/12	10/13	10/14	10/15	10/16	10/17	10/18	10/19	10/20	10/21	10/22	10/23	10/24	10/25	10/26	10/27	10/28	10/29	10/30	10/31	TOTAL	
00-01	1140.4	1221.8	1130.0	1164.3	1080.8	1237.2	1182.2	1244.0	998.6	1171.3	1102.1	1126.7	1106.6	1065.2	1276.2	1361.8	924.6	1176.9	1366.3	1215.5	1254.3	1238.8	1049.6	1161.0	1103.5	1068.5	1082.7	1070.6	990.8	1146.5	1041.2	35 500.0	
01-02	1089.4	1047.4	1100.1	1300.7	973.3	1164.5	1083.5	1062.7	1012.3	923.4	1025.4	1036.1	1128.0	1256.2	1301	1229.3	1026.9	1228.1	1375.6	1302.7	1323.1	1167.1	1166.0	1189.2	1153.7	1121.4	1159.2	1157.0	1156.3	1278.3	1011.1	35 549.0	
02-03	1066.5	1036.0	1125.8	1296.9	992.6	1260.7	1237.4	930.6	1105.3	1073.0	1233.0	1036.9	1142.0	1395.0	1485.1	1039.5	1150.6	1195.1	1329.8	1346.4	1271.6	1209.3	1241.5	1245.1	1269.0	1247.4	1102.5	1275.5	1314.8	1211.1	1079.5	36 945.5	
03-04	1157.2	1193.1	1125.3	1310.4	965.6	1287.9	1254.9	960.5	1120.2	1016.8	1282.2	1207.2	1102.2	1438.9	1455.5	1162.6	1122.3	1235.4	1346.5	1295.1	1320.4	1251.9	1252.0	1188.8	1272.9	1181.8	1103.6	1226.5	1320.0	1171.4	1061.2	37 390.3	
04-05	1099.3	1062.0	1112.1	1304.4	972.6	1301.9	1079.1	984.2	1121.2	988.1	1085.8	1136.6	1218.6	1295.1	1383.4	1066.5	1022.5	1291.7	1280.8	1245.6	1304.4	1077.9	1148.1	1143.8	1179.1	1166.2	1103.4	1216.7	1244.2	1219.6	1109.1	35 954.0	
05-06	1084.6	899.7	1055.6	1132.0	1025.7	1298.1	994.7	1200.3	1044.9	941.8	1091.4	1004.4	1152.6	1174.4	1344.1	1196.3	876.9	1135.2	1090.2	1276.6	1202.2	1188.6	1206.6	1106.4	1017.6	1184.3	1036.1	1103.0	1035.5	994.7	1009.5	34 104.0	
06-07	1124.5	911.0	996.3	946.2	799.8	1108.4	845.7	922.3	1112.8	867.5	1054.7	954.8	1002.4	1017.6	1136	1323.8	1133.6	1022.8	999.0	1176.0	1130.0	1267.3	1214.1	1154.6	1283.4	911.0	1064.1	1009.4	1165.4	1275.4	941.2	32 871.1	
07-08	1320.6	880.0	1172.2	1243.8	969.2	979.4	1008.5	899.9	1263.8	989.2	1158.5	1147.6	954.7	1080.2	1440.5	1471.7	1324.4	1226.7	1090.2	1186.3	1255.9	1411.6	1276.9	1406.6	1437.8	916.9	1007.7	1194.6	1427.2	1331.8	1123.5	36 597.9	
08-09	1136.8	879.0	1049.8	1159.4	1031	967.4	1043.0	873.3	1196.1	1102.4	1168.1	1212.4	1148.7	979.7	1105.5	1422.1	1247.6	1161.0	1159.1	1206.5	1217.7	1172.1	1388.2	1227.9	1327.1	904.0	839.7	1108.9	1262.1	1185.9	980.7	34 863.2	
09-10	1196.6	930.5	1115.1	1220.4	1151.8	996.4	1127.3	901.2	1156.4	1042.7	1206.4	1189.8	1036.8	985.6	1017.6	1471.8	1219.2	1238.7	1345.7	1217.5	1195.6	1232.9	1333.5	1313.2	1284.9	939.6	909.3	1107.0	1263.3	1124.3	1213.1	35 684.2	
10-11	1156.5	1081.2	1101.0	1125.1	1147.9	1015.2	1069.9	889.5	1195.9	943.2	1187.9	1251.6	1114.6	954.6	1136.9	1426.1	1199.5	1218.5	1374.3	1113.7	1154.9	1281.7	1360.3	1280.7	1228.4	994.0	899.0	1138.2	1152.4	1148.5	1187.2	35 528.4	
11-12	1241.9	1081.5	1094.4	1129.4	1180.1	1067.7	1088.1	1011.1	1187.0	890.7	1195.1	1226.4	1141.3	928.6	1052.6	1428.1	1099.1	1198.3	1376.6	1050.7	1139.7	1266.1	1384.6	1104.0	1258.9	1064.3	919.2	1076.6	1197.7	1144.7	1140.4	35 364.9	
12-13	1137.9	1133.6	1079.6	1165.2	1035.9	1037.4	1076.4	989.7	1239.7	935.5	1217.7	1205.3	1136.0	1065.8	1099.9	1371.6	1196.8	1062.1	1346.8	972.1	1161.7	1264.3	1335.0	1111.2	1174.7	1059.9	900.9	1085.0	1107.2	1160.1	1138.3	35 003.3	
13-14	1139.7	1146.1	1080.3	1128.5	1003.9	980.3	1050.7	1001.4	1248.1	942.7	1204.7	1204.0	1038.6	1056.7	1106	1313.7	1203.2	1038.8	1187.5	1108.4	1206.6	1234.1	1330.4	1094.5	1124.4	991.9	879.1	1047.4	1118.7	1187.6	1005.7	34 403.7	
14-15	1109.7	1137.3	1072.4	1120.2	1003	965.4	1048.5	997.0	1235.8	957.2	1295.0	1179.1	983.3	1033.6	1092.4	1281	1198.7	1020.3	1209.4	1100.6	1195.2	1198.6	1203.7	1144.7	1065.3	960.9	845.0	1044.7	1070.0	1053.8	942.7	33 765.0	
15-16	1092.7	1125.6	1091.3	1132.0	1012.3	969.5	1045.0	1003.6	1240.8	970.2	1179.3	1200.5	1062.2	1082.2	896.3	1276.5	1161.7	1052.0	1131.8	1080.8	1164.2	1201.5	1192.4	1144.1	1093.6	919.7	840.2	1082.0	1094.3	1204.0	944.3	33 886.1	
16-17	1129.8	1098.0	1136.2	1137.5	1049.6	977.1	1026.3	945.3	1229.9	988.4	1160.1	1165.9	1056.6	1075.1	965.3	1237.8	1180.7	1111.6	1212.3	1152.9	1196.7	1187.4	1175.8	1037.2	1109.7	908.7	864.9	1160.1	1224.8	1099.7	983.7	33 585.6	
17-18	1099.8	1040.4	1178.7	1167.0	1006.8	968.1	1077.4	974.0	1105.1	907.4	1189.7	1085.4	1028.1	999.4	1122.6	1181.8	1167.2	1042.4	1068.7	1193.6	1185.4	1241.7	1118.5	1113.6	1074.3	902.1	803.8	1294.9	1365.6	1230.8	1308.6	34 268.9	
18-19	1097	962.4	1249.7	1210.3	1080.8	1094.1	1100.2	930.9	1248.1	946.0	1205.5	1310.0	1225.9	1067.5	1100.7	1270.1	1257.5	1114.8	1333.0	1208.5	1060.8	1220.3	1041.4	1237.6	1034.2	1083.4	1029.7	1165.2	1265.0	1231.6	1208.1	35 569.3	
19-20	1160.6	959.3	1200.4	1205.4	1376.2	1344.3	1168.5	991.1	1293.2	1141.8	1174.1	1298.9	1374.3	1125.8	1054.4	1301.2	1190.4	1178.9	1252.1	1279.3	1129.3	1253.8	1134.6	1259.9	1090.0	1103.0	1102.9	1136.6	1113.9	1109.3	1160.1	36 663.6	
20-21	1316.5	896.4	1265.8	1155.8	1159.7	1193.4	1158.3	922.1	1315.9	1085.9	1168.3	1226.9	1185.7	1235.7	1075.4	1398.3	1174.6	1197.5	1292.6	1212.8	1279.2	1405.9	1127.5	1451.3	1290.9	956.4	1153.4	1379.9	1520.1	1106.5	1182.1	37 751.5	
21-22	1090.7	1022.8	1104.7	981.1	928.6	1037.9	991.1	824.6	1105.4	1046.1	1144.5	1102.5	956.1	1025.6	969.7	1275.3	1174.4	1114.6	1142.6	1089.3	1151.7	1218.3	1108.8	1216.6	1039.1	889.4	1242.1	1382.5	1386.6	1424.5	1190.9	34 358.1	
22-23	970.3	922.1	1131.5	833.5	851.3	952.9	967.8	853.2	1188.9	978.9	1068.6	1152.5	998.3	1136.3	1060.9	1249.6	1099.2	982.0	1306.8	1098.7	1179.8	1097.9	1161.2	1036.1	1103.5	1080.9	1086.1	1390.2	1229.9	1252.9	994.3	33 416.1	
23-24	992.1	1192.9	1196.0	1183.6	1082.1	1082.9	1165.2	1199.4	1293.3	1250.2	1212.7	1236.7	1137.2	1312.9	1311.3	1158.8	1123.4	1051.6	1181.2	1094.8	1106.1	1112.5	1078.6	1105.4	1288.7	1109.7	1161.8	1228.0	1220.9	1233.0	918.5	35 925.0	
24-25																																	1 135.9
TOTAL	27 151.1	24 860.1	26 964.3	27 733.1	24 680.6	26 288.1	25 889.7	23 511.9	28 258.7	24 080.6	28 036.3	27 898.2	26 330.8	26 787.7	27 989.3	30 905.3	27 475.0	27 300.0	29 798.9	28 224.4	28 786.5	29 500.6	29 029.3	28 473.5	28 304.7	24 665.4	25 272.3	28 080.5	29 246.7	28 766.0	25 775.0	846 064.6	

HUPX Day-Ahead Market Prices

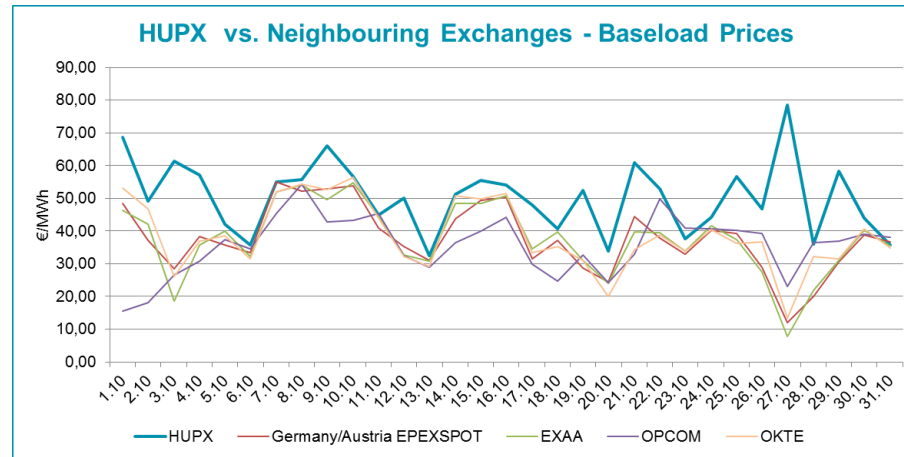
€/MWh / Delivery day / hour

Delivery hour	10/01	10/02	10/03	10/04	10/05	10/06	10/07	10/08	10/09	10/10	10/11	10/12	10/13	10/14	10/15	10/16	10/17	10/18	10/19	10/20	10/21	10/22	10/23	10/24	10/25	10/26	10/27	10/28	10/29	10/30	10/31	AVG
00-01	32.55	37.21	35.01	38.07	34.19	37.16	31.10	46.40	34.49	37.11	37.05	26.40	25.54	30.76	73.35	33.00	27.31	11.33	33.80	19.79	21.45	30.04	55.09	20.38	38.03	33.62	50.05	-1.00	50.09	45.05	29.01	33.98
01-02	30.50	33.25	23.90	23.94	32.02	28.10	30.22	37.06	34.43	33.09	34.86	25.30	21.90	31.03	45.03	32.81	27.00	12.20	31.41	14.24	13.00	28.10	50.07	19.00	38.00	30.52	50.01	-2.17	38.05	37.95	27.78	29.44
02-03	27.10	29.77	20.23	15.20	31.07	25.07	27.65	34.00	31.55	31.43	32.30	23.06	21.30	28.00	31.01	30.85	23.55	12.10	28.38	10.52	10.10	24.10	37.42	16.00	37.92	22.30	0.28	0.01	20.47	23.67	26.40	23.64
03-04	25.80	28.00	19.64	13.00	30.00	21.60	27.19	30.90	29.66	29.56	31.00	22.00	21.49	26.00	27.86	29.75	21.83	12.30	27.00	9.66	9.80	21.03	12.88	16.16	35.08	19.50	0.26	0.01	20.43	20.75	25.80	21.48
04-05	25.40	28.66	19.28	20.10	29.04	20.09	28.07	32.02	30.41	30.43	31.00	21.61	23.00	26.80	38.14	30.00	21.30	15.88	26.00	7.75	8.06	23.00	13.70	19.45	38.02	19.00	3.00	1.00	30.05	24.18	28.38	22.99
05-06	34.64	33.70	21.44	40.05	31.19	21.09	33.06	37.70	50.08	35.07	35.05	23.38	23.37	31.70	66.01	33.62	24.34															

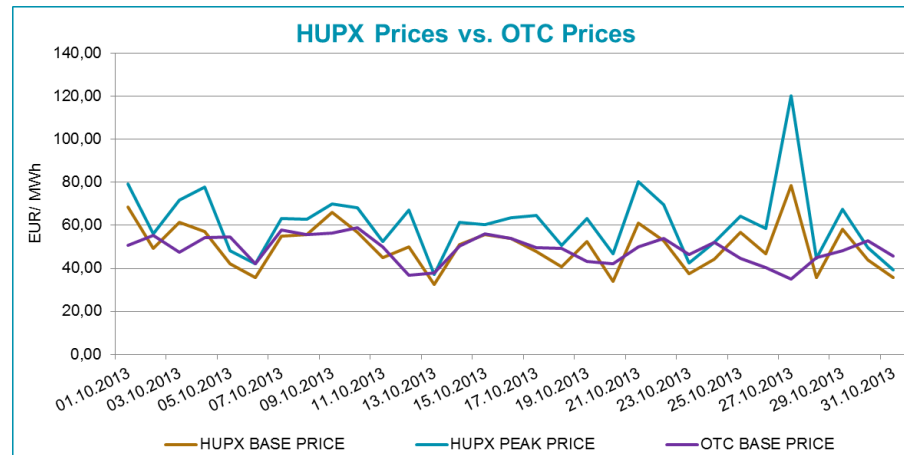
HUPX prices vs. Neighbouring Exchanges – Hourly Prices



HUPX prices vs. Neighbouring Exchanges – Base Prices



HUPX vs. OTC



Diff. BL.	HUPX↔OTC	1,43
Diff. PL.	HUPX↔OTC	2,08

Average of aggregated OFFERS/BIDS 01/10/2013-31/10/2013

Data shown in the table reflects the average hourly aggregated maximum sell and buy volumes, not considering price steps.

Hour	Offers	Bids	Index volumes
H1	1 231,1	1 629,1	1 145,2
H2	1 341,4	1 590,7	1 146,7
H3	1 471,7	1 529,1	1 191,8
H4	1 482,7	1 503,0	1 206,1
H5	1 375,2	1 523,9	1 159,8
H6	1 223,8	1 589,1	1 100,1
H7	1 321,8	1 699,0	1 060,4
H8	1 383,5	1 909,9	1 180,6
H9	1 283,4	1 851,1	1 124,6
H10	1 290,3	1 881,5	1 151,1
H11	1 255,0	1 892,2	1 146,1
H12	1 205,9	1 878,0	1 140,8
H13	1 287,7	1 886,9	1 129,1
H14	1 264,8	1 854,1	1 109,8
H15	1 179,9	1 822,6	1 089,2
H16	1 190,2	1 816,9	1 083,4
H17	1 176,3	1 867,0	1 092,4
H18	1 195,7	1 909,6	1 105,4
H19	1 183,5	2 029,3	1 147,4
H20	1 176,4	2 097,7	1 182,7
H21	1 342,9	2 030,2	1 217,8
H22	1 261,3	1 879,6	1 108,3
H23	1 270,6	1 741,8	1 077,9
H24	1 438,0	1 951,5	1 158,9
H25	949,1	1 388,9	1 135,9
Σ	31 782,4	44 752,6	27 292,4

Base	
MIN (offer)	1 176,3
MAX (offer)	1 482,7
MIN (bid)	1 503,0
MAX (bid)	2 097,7
Average (offer)	1 284,7
Average (bid)	1 806,8

Peak	
MIN (offer)	1 176,3
MAX (offer)	1 290,3
MIN (bid)	1 816,9
MAX (bid)	2 097,7
Average (offer)	1 224,1
Average (bid)	1 898,9

Aggregated OFFERS/BIDS 01/10/2013-31/10/2013

Data shown in the table reflects hourly aggregated maximum sell and buy volumes, not considering price steps.

Hour	Offers	Bids	Index volumes
H1	38 164,6	50 502,6	35 500,0
H2	41 584,9	49 311,3	35 549,0
H3	45 622,9	47 401,4	36 945,5
H4	45 962,6	46 593,3	37 390,3
H5	42 632,5	47 240,5	35 954,0
H6	37 938,4	49 261,8	34 104,0
H7	40 974,8	52 668,0	32 871,1
H8	42 889,6	59 207,4	36 597,9
H9	39 785,4	57 384,9	34 863,2
H10	40 000,5	58 326,3	35 684,2
H11	38 904,6	58 658,7	35 528,4
H12	37 381,8	58 218,5	35 364,9
H13	39 919,4	58 493,4	35 003,3
H14	39 209,4	57 476,8	34 403,7
H15	36 577,5	56 499,6	33 765,0
H16	36 895,7	56 322,8	33 586,6
H17	36 466,5	57 877,8	33 865,1
H18	37 067,7	59 197,8	34 268,9
H19	36 688,6	62 907,2	35 569,3
H20	36 468,5	65 028,5	36 663,6
H21	41 630,7	62 937,0	37 751,5
H22	39 099,2	58 267,4	34 358,1
H23	39 388,8	53 994,4	33 416,1
H24	44 576,7	60 495,9	35 925,0
H25	949,1	1 388,9	1 135,9
Σ	956 780,4	1 345 662,2	846 064,6

Base	
MIN (offer)	36 466,5
MAX (offer)	45 962,6
MIN (bid)	46 593,3
MAX (bid)	65 028,5
Average (offer)	39 826,3
Average (bid)	56 011,4

Peak	
MIN (offer)	36 466,5
MAX (offer)	40 000,5
MIN (bid)	56 322,8
MAX (bid)	65 028,5
Average (offer)	37 947,1
Average (bid)	58 866,0